

HARMONY by Legacy Window Coverings

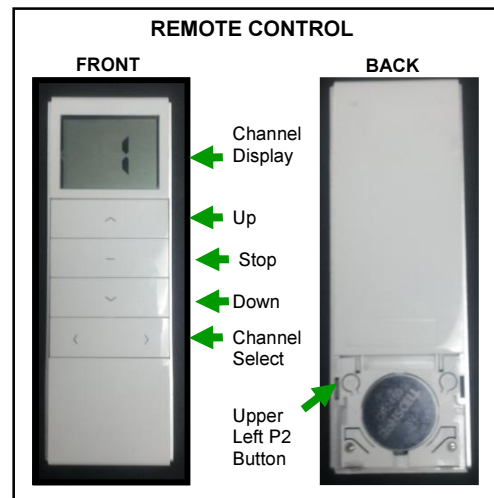
Programming Harmony Cellular Shade Motorization

BEFORE YOU START

1. BATTERIES ARE NOT INCLUDED
2. EACH SHADE REQUIRES 8 AA BATTERIES
3. THE 15 CHANNEL REMOTE REQUIRES A 3 VOLT CR2450 BATTERY (THIS CAN BE PURCHASED ONLINE OR AT SPECIALTY BATTERY STORE. YOU MAY NOT FIND THIS BATTERY AT BIG BOX STORES)
4. ALL SHADES COME PROGRAMMED FROM THE FACTORY. PLEASE TELL US WHICH CHANNEL YOU WANT THE SHADES PROGRAMMED TO: CHANNELS 1-15 ON THE 15 CHANNEL REMOTE. DO NOT REQUEST CHANNEL 0. IT IS THE ALL CHANNEL. EACH CHANNEL WILL HANDLE UP TO 20 SHADES.

PROGRAMMING GUIDELINES

1. If there is more than 1 shade in the same room only the shade being programmed shall be powered
2. When pressing the buttons during programming please leave 1 second intervals between each pressing of the buttons
3. It is imperative that the programming sequences are followed exactly
4. Handle the remote with care. Make sure you do not inadvertently push other buttons while switching between the pushing of the front buttons and the back buttons. Make sure you do not inadvertently press buttons simultaneously while switching between



HOW TO PROGRAM

Step 1: PAIR REMOTE CHANNEL WITH SHADE

1. Make sure all battery packs are unplugged from the motors.
2. Start with fresh batteries for the motor battery packs. (8 AA batteries per shade). Install the batteries according to the diagram.
3. Ensure the remote control is powered. (1 3V CR2450 Battery). If powered the LCD screen will display a number 0-15 (0 is the ALL button. Do not program the shade to this channel.)
4. Plug in the shade you wish to program first
5. Remove the battery cover from the remote control and you will see 4 buttons surrounding the battery. Locate the UPPER LEFT P2 BUTTON. You will not need any of the other buttons.
6. On the shade locate the manual button on the top of the shade. Hold this button until the shade jogs. This lets the motor know that it is ready to be paired with the remote.
 - A. If the manual button is out of reach, you can pair the channel by unplugging the shade from the power source.
 - i. Cut the power of the shade for more than 1 minute
 - ii. Plug the shade back in – the shade will jog
7. On the remote select the channel you would like to pair the motor with.
8. Press the UPPER LEFT P2 BUTTON – the shade will jog
9. Press the UPPER LEFT P2 BUTTON – the shade will jog
10. Press the UP BUTTON ON THE FRONT OF THE REMOTE – the shade will jog
11. Press the DOWN BUTTON ON THE FRONT OF THE REMOTE – the shade will begin to move downward. The shade is now paired to the selected channel. Stop the shade before it gets all the way to the bottom. There are no limits set on the shade now.

HARMONY by Legacy Window Coverings

Programming Harmony Cellular Shade Motorization

HOW TO PROGRAM (CONT.)

Step 2: SET THE UP AND DOWN LIMITS FOR THE SHADE

1. Start on the paired channel
2. Press the UPPER LEFT P2 BUTTON – the shade will jog
3. Press the UP BUTTON ON THE FRONT OF THE REMOTE – the shade will jog
4. Press the UPPER LEFT P2 BUTTON – the shade will jog
5. Press the UP BUTTON ON THE FRONT OF THE REMOTE – the shade will begin to move up to the desired upper position. (If the shade is already in the desired upper limit position skip this step and move to step 6)
6. Press the STOP BUTTON ON THE FRONT OF THE REMOTE when the shade reaches the desired upper limit
7. Press the STOP BUTTON ON THE FRONT OF THE REMOTE 5 TIMES – the shade will jog once it has been paired with the remote
8. Press the DOWN BUTTON ON THE FRONT OF THE REMOTE – the shade will begin moving down
9. Press the STOP BUTTON ON THE FRONT OF THE REMOTE – when the shade reaches the desired bottom limit
10. Press the STOP BUTTON OF THE FRONT OF THE REMOTE 5 TIMES – the shade will jog once it has paired with the remote

STEP 3: OPTIONAL SETTING OF A THIRD/MIDDLE LIMIT

1. Move the shade to the desired third/middle limit
2. Press the STOP BUTTON ON THE FRONT OF THE REMOTE – the shade will stop
3. Press the P2 BUTTON ON THE BACK OF REMOTE – the shade will jog
4. Press the STOP BUTTON ON THE FRONT OF THE REMOTE – the shade will jog
5. Press the STOP BUTTON ON THE FRONT OF THE REMOTE – the shade will jog
6. The optional third/middle limit is now set

SPECIAL NOTE: SHADES CAN BE CONTROLLED BY MULTIPLE REMOTES

SPECIAL STEP: TO COPY ONE REMOTE (a) TO A SECOND REMOTE (b)

1. Press UPPER LEFT P2 BUTTON ON THE BACK OF THE REMOTE (a) – the shade will jog
2. Press UPPER LEFT P2 BUTTON ON THE BACK OF THE REMOTE (a) – the shade will jog
3. Press UPPER LEFT P2 BUTTON ON THE BACK OF THE REMOTE (b) – the shade will jog
4. The programming from remote (a) is now copied to remote (b)